



Interior flooring.
The same flooring will be used in outdoor
areas but it will be anti-slip.
PAY. ARDESIA 90X90 AVORIO



Cladding in outdoor areas.
NATURAL DRY STONE MASONRY



Bathroom tiling
REV. ARDESIA 60X120 AVORO

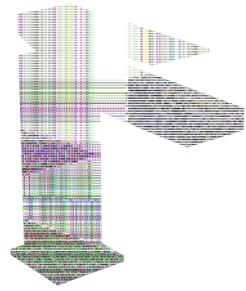


Bathroom tiling
REV. ARDESIA FLAGSTONE 40X120 AVORIO



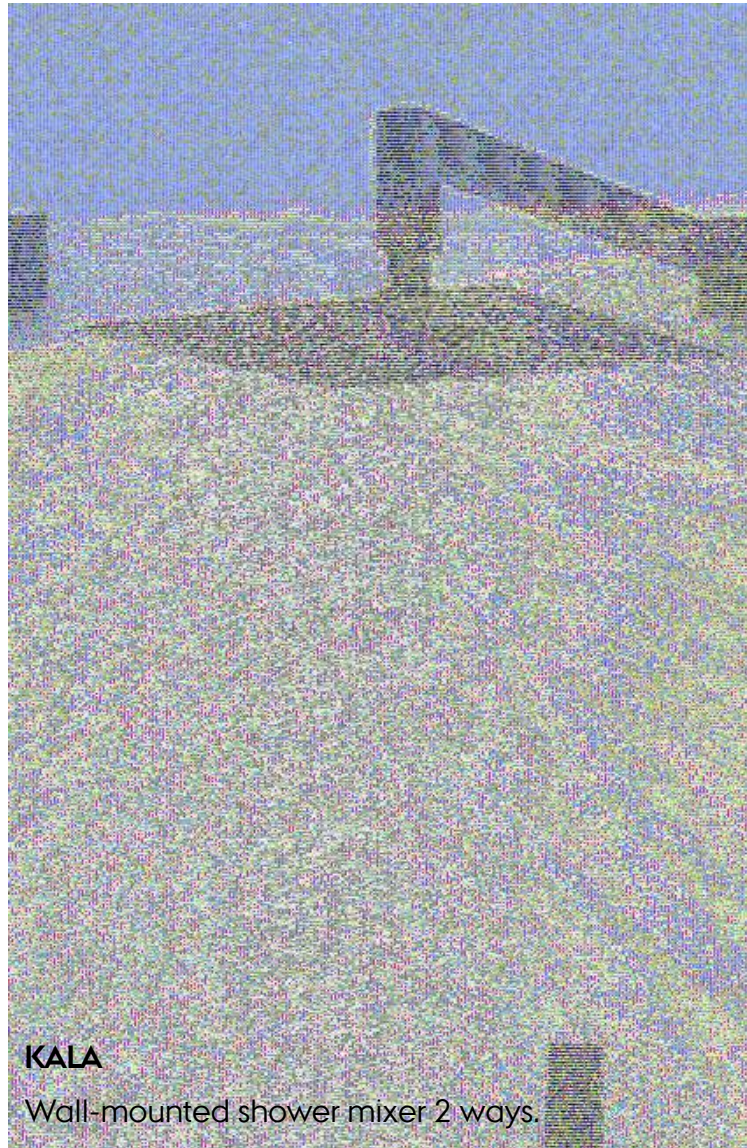
Bathroom tiling
REV. ARDESIA TILT 40X120 AVORIO

GRB[®] KALA



KALA

Washbasin in all the bathrooms.



KALA

Wall-mounted shower mixer 2 ways.



Shower drainage system

Shower glass with black profile.

Shower floor like the rest of the house.



ROCA

Compact concealed cistern



ROCA

Compact concealed cistern



ROCA ONA

Rimless compact wall hung toilet made of white sanitary porcelain with horizontal outlet.



hönnun

BATHROOM FURNITURE - HÖNNUN - B100 SERIES

With a wide variety of handle or pull-opening options, the units in this series are available in laminates.

The drawers can be opened by means of a handle, a handle or a pull-out handle.

The drawers are full-extension drawers with cushioned brake. The interior is grey metal.





Possibility to choose the colours of the cabinet doors.



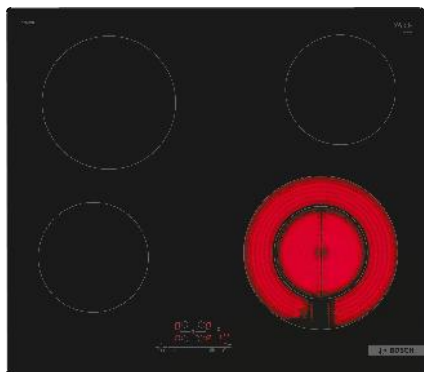
Kitchen worktop
SILESTONE DANAÉ



Cladding kitchen walls
SALONI REV. ARDESIA 60X120 AVORO



Laminate kitchen furniture.
ROBLE GLADSTONE NATURAL



BOSCH VITRO HOB

4 Series 60 cm glass ceramic hotplate Black, without profile



BOSCH OVEN

4 Series Oven with steam 60 x 60 cm
Stainless steel



BOSCH MICROWAVE OVENS

4 Series Built-in microwave oven



BOSCH REFRIGERATOR

4 Series Built-in combi fridge freezer 177.2 x 54.1 cm Door sliding door



BOSCH CEILING EXTRACTOR FAN
Series 4 Telescopic hood 60 cm silver



Kitchen tap with pull-out spout - black finish.



BOSCH DISHWASHER
2 Series Fully integrated integrated



Undermount stainless steel sink

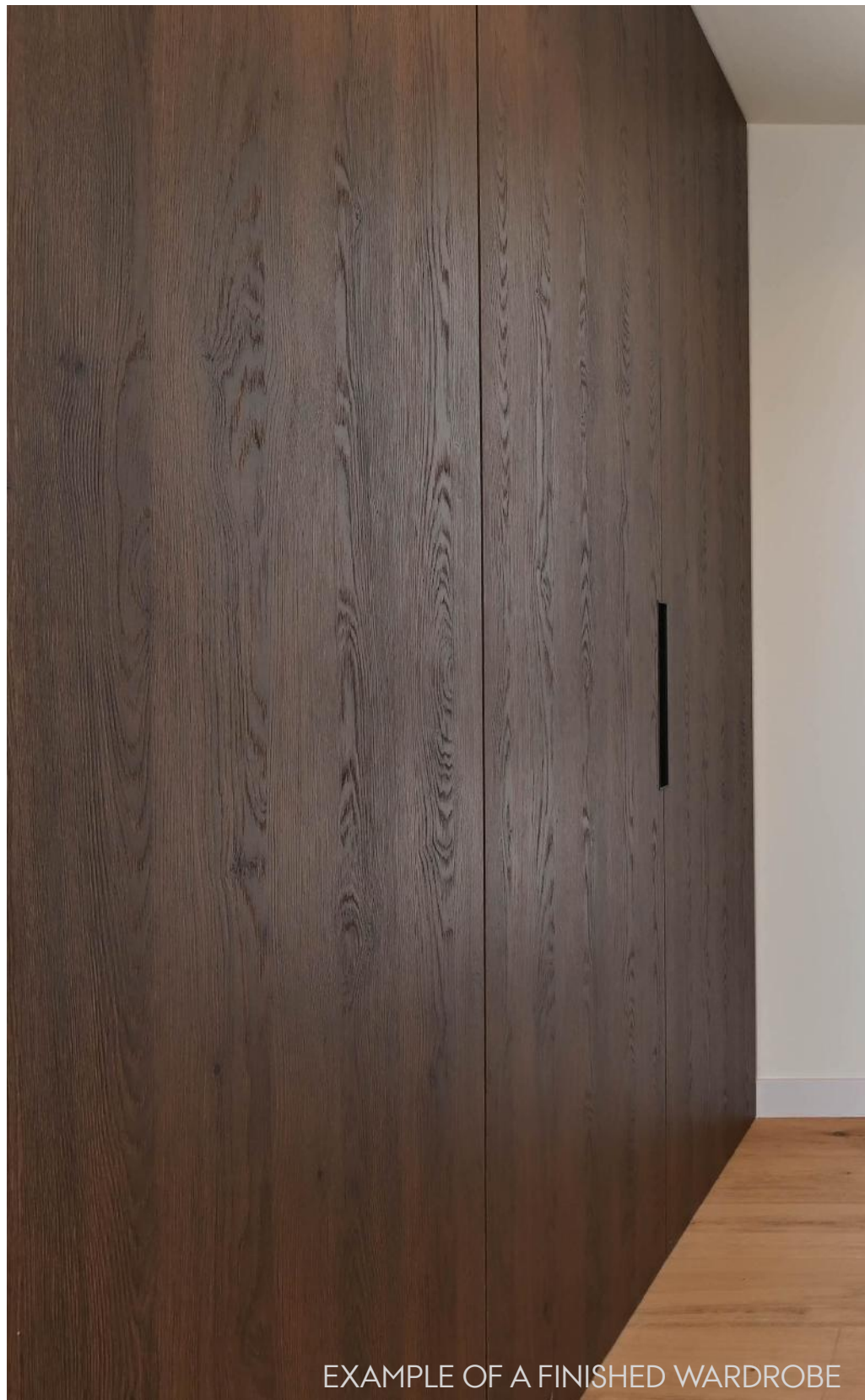




Concealed hinge - Interior doors



2.03 high



EXAMPLE OF A FINISHED WARDROBE



Cabinets - Exterior
ROBLE CHARLESTON MARRON OSCURO



Cabinets - Interior
CLAY GREY U727 ST9



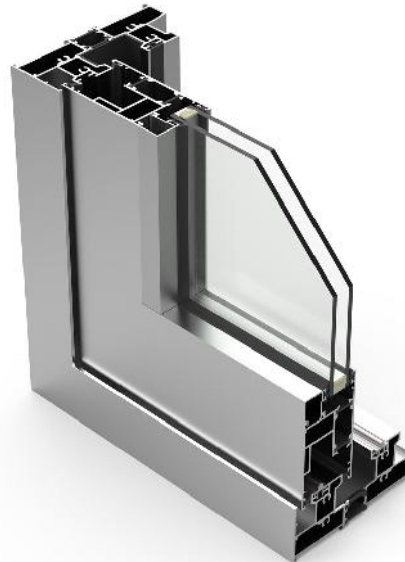
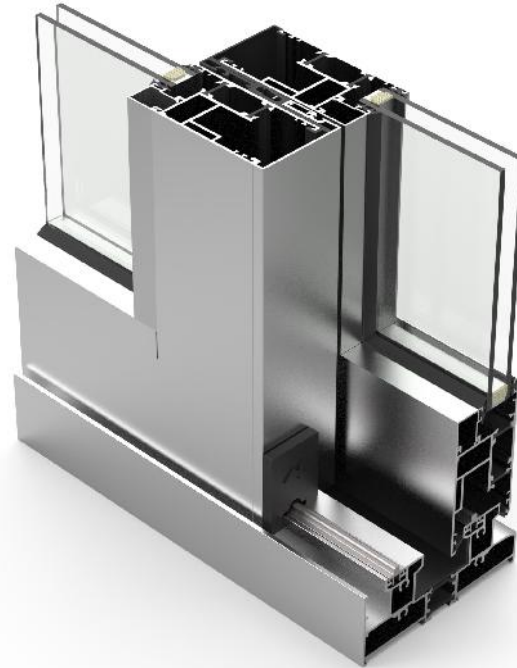
- * Possibility to choose the colours of the cabinet doors.
- * The cabinets include interior lining, top shelf and hanging rail. All other equipment is extra.



ALUGOM SERIE MATRA 110 / 135

Alugom's MATRA 135 RPT system is a sliding system designed to support heavy weights, and is therefore specifically indicated for the installation of large sashes. Available in configurations of 1, 2 and 3 rails, including the single-rail version with fixed leaf plus sliding leaf in the same structure. It offers in-line sliding or lift-and-slide closing options, with an angular design and a 50 mm central leaf profile that maximises the field of vision. The leaves can support up to 200 kg (in-line sliding) with adjustable tandem wheels and 400 kg (lift and slide). In addition, it allows different finishes and opening configurations, guaranteeing optimum thermal and acoustic insulation.

Possibility of choosing a colour from the range of standard colours.



External shutters in the same colour as the exterior carpentry, motorised and with hidden drawer on the inside.

Blinds will be installed in all the bedrooms of the house.



Recommended colour for this project: RAL 1019 Textured



Enclosure of the plot on both sides and at the back with a 2 metre high green fence of simple torsion.

Enclosure of plot on the street side by means of 1 metre high concrete block plastered with single-layer plaster and painted white.

Vehicle entrance door 1.75 high. Includes motor and 2 remote controls.



Colour: RAL 1019 Textured



CEILING LIGHT SPOTS

They are installed throughout the interior of the house according to the electrical plan of the project.

Led light 3000k



EFFAPEL APOLO 5000

The APOLO 5000 Series stands out for its sober design and straight lines.

Its discreet presence confers a minimalist and distinguished touch to your decoration.

We recommend installing it throughout the house except in bathrooms and kitchens.



BLACK LANTERNS OUTSIDE THE HOUSE

Lanterns will be installed on the four facades of the house according to the electrical plan of the project.



EFFAPEL APOLO 5000

We recommend installing it in bathrooms and kitchens



STREET LAMPS AT THE ENTRANCE TO THE STREET DOOR

Street lights will be installed on the pillars of the pedestrian and vehicle gate at the entrance to the plot.



ELECTRICAL PANEL OF THE DWELLING



VIDEO INTERCOM

Video intercom system for exterior door opening. Includes app for control from mobile phone or tablet.

HOT WATER



Armoured vertical wall mounted electric water heater 200 L

VENTILATION SYSTEM

Ventilation system of the house with mechanical extraction of the interior air through ducts from the kitchen and bathrooms to the chimney on the roof.

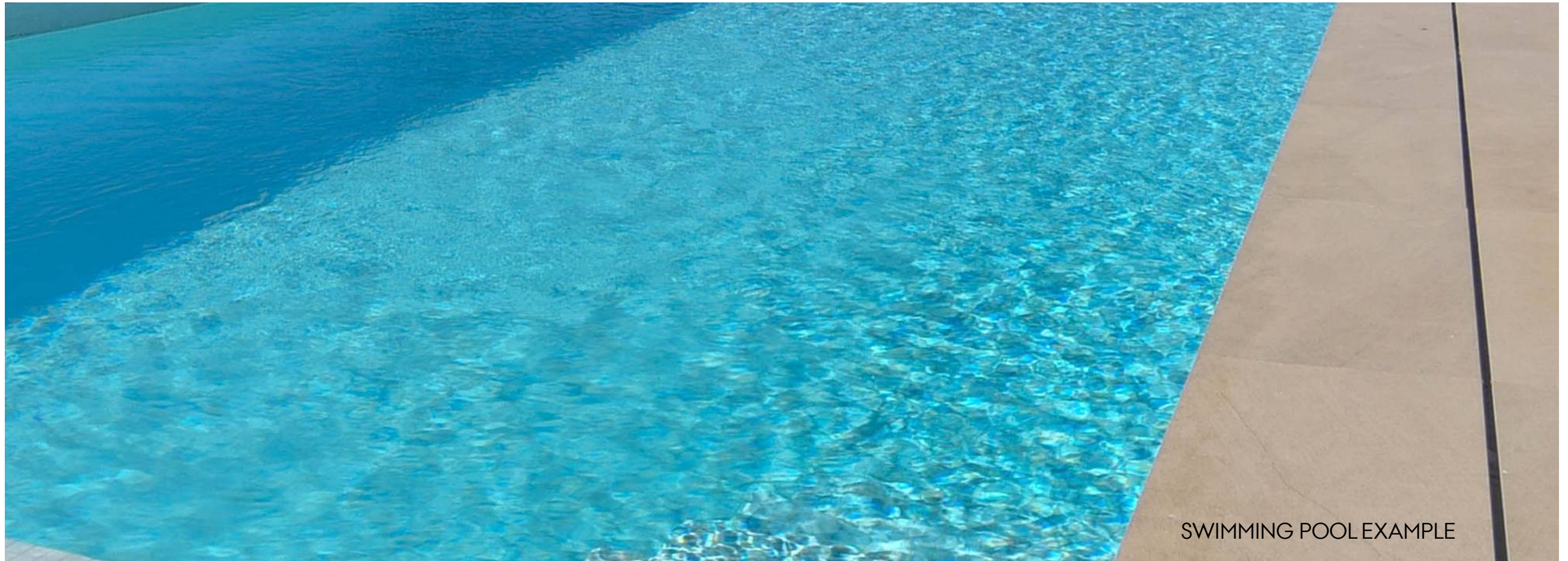


AIR CONDITIONING + HEATING

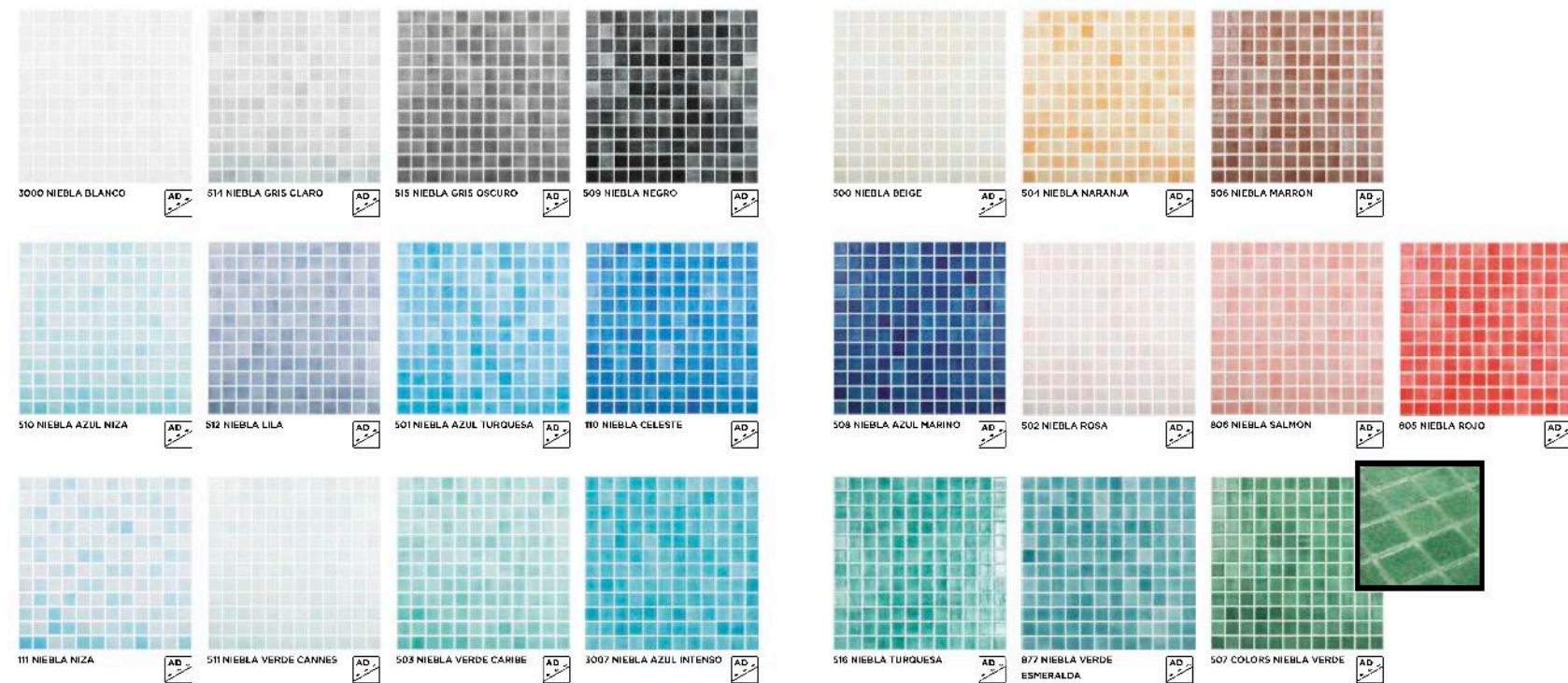
Ducted air conditioning with built-in machine.

- Installation of ducts upstairs and downstairs
- Air conditioning machine by floor





SWIMMING POOL EXAMPLE



Swimming pool mosaic - to choose from the catalogue - misty colours



ASTRALPOOL Victoria Plus
1 x swimming pool filtration pump



SWIMMING POOL FILTRATION SYSTEM
ASTRALPOOL ICE D.750



Outdoor swimming pool shower: